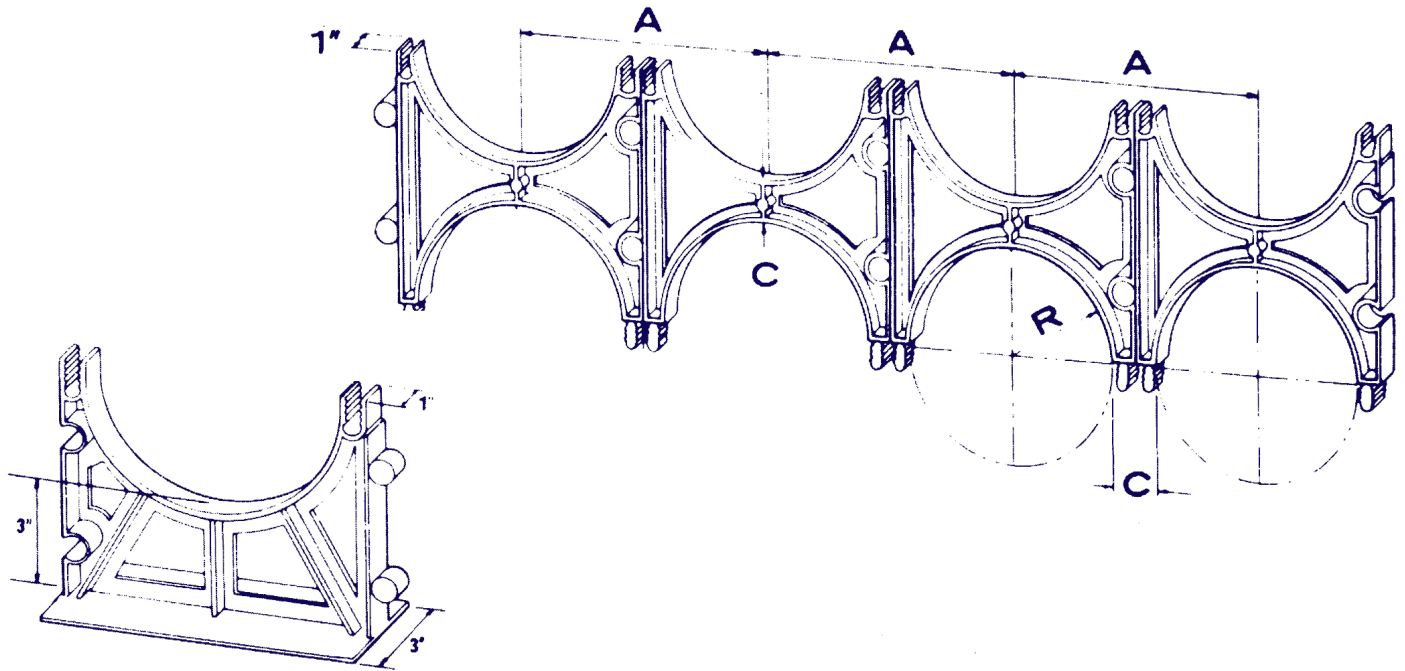


## Underground Products Intermediate and Base Spacer Dimensions



Base spacers provide a 3" separation between the bottom row of ducts and the trench floor, except for the 4" x 1" size which is 1 3/4" separation

### Dimensional Data

| Nominal Size | 1" Separation       |     |     | 1 1/2" Separation |      |     | 2" Separation |      |     | 3" Separation |      |     |
|--------------|---------------------|-----|-----|-------------------|------|-----|---------------|------|-----|---------------|------|-----|
|              | R                   | A   | C   | R                 | A    | C   | R             | A    | C   | R             | A    | C   |
| 2"           | Saddle Spacers Only |     |     | 1.2               | 4.0  | 1.5 | 1.2           | 4.5  | 2.0 | 1.2           | 5.5  | 3.0 |
| 3"           | Saddle Spacers Only |     |     | 1.8               | 5.1  | 1.5 | 1.8           | 5.6  | 2.0 | 1.8           | 6.6  | 3.0 |
| 4"           | 2.3                 | 5.6 | 1.0 | 2.3               | 6.1  | 1.5 | 2.3           | 6.6  | 2.0 | 2.3           | 7.6  | 3.0 |
| 5"           | Saddle Spacers Only |     |     | 2.9               | 7.3  | 1.5 | 2.9           | 7.9  | 2.0 | 2.9           | 8.9  | 3.0 |
| 6"           |                     |     |     | 3.3               | 8.2  | 1.5 | 3.3           | 8.7  | 2.0 | 3.4           | 9.8  | 3.0 |
| 8"           |                     |     |     | 4.3               | 10.2 | 1.5 | 4.3           | 10.7 | 2.0 | 4.3           | 11.7 | 3.0 |