

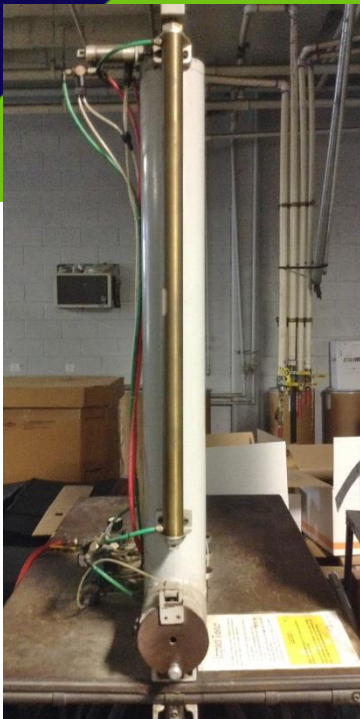
QUALITY CONTROL

Quality checks are performed on all manufactured products by a machine operator every two hours as well as by the Quality Technician twice a shift.

- Measurement data is recorded and maintained on a Quality Spec Sheet
- Quality Spec Sheets identify critical measurements/tolerances, appropriate gauges and measuring devices to use for testing.

Lot Traceability Identification labels are placed on all finished good cartons that include:

- Product Identification
- Order Identification
- Operator ID#
- Date Manufactured



gsib

GS Industries of Bassett, Ltd. 85 Rosemont Road
www.gsib.com smh@gsib.com

Bassett, VA 24055
800-445-2192